

Draught Proofing

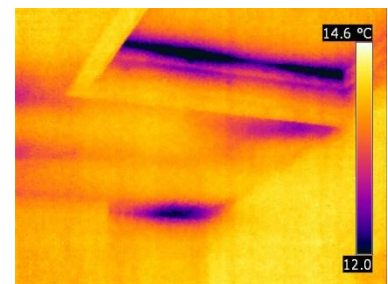
Draughts are the uncontrolled movement of air through a property and can make us uncomfortable. A substantial amount of heat is lost from having a draughty house – approximately 20%. If you can feel a breeze around windows, doors or floors you will be losing heat from your house and you should try to reduce this as much as possible. Even if your house is very well insulated, it will still be losing heat if the draughts are not fixed – insulating without draught proofing will simply increase the proportion of heat loss via draughts. Draught proofing is very cheap, can be easily installed and is an effective solution – it simply fills the gap that is responsible for the draught. The popular analogy that is used to explain draught insulation is that of a scarf – filling in the gaps and stopping heat escaping. Several types of proofing are available; brushes, foams, sealants or rubber strips. Ask at Oak Tree House for more information on where to get the right type of insulation for your needs. There is also a financial benefit from draught proofing - you could potentially save up to £30 a year on your heating bills.

Other common areas that draughts can occur are:

- Along skirting boards
- Gaps around pipes to water stores
- Around boiler flues & extraction points
- Between floor boards

Oak Tree House Experience

A thermal assessment of Oak Tree House highlighted quite clearly the importance of draught proofing. This is illustrated quite clearly from the photos below that show heat escaping around the corners of the rooms, through the floor boards and under the door. Outgoing draughts in Oak Tree House were mainly blocked during the major renovation, which included blocking the fireplace and insulating around pipe-



Actio₂n Surrey

SURREY'S LOW CARBON COMMUNITY

work between the ceiling and roof. However, a major out-going draught that was confirmed in the thermal imaging was a small gap around the loft hatch.

It is important to ensure that a good thermal 'envelope' is created in a property. Stopping draughts plays a significant part in achieving this. You can test for incoming draughts in your house quite easily just by standing next to back or front doors or windows in rooms that are cold and feeling round the edges of the door/windows.



Actio₂n Surrey
SURREY'S LOW CARBON COMMUNITY



Action Surrey is a Surrey Improvement Partnership project supported by the following Councils and managed by Thamesway Energy Ltd, Woking Borough Council's wholly owned energy services company. www.actionsurrey.org 0800 783 2503